

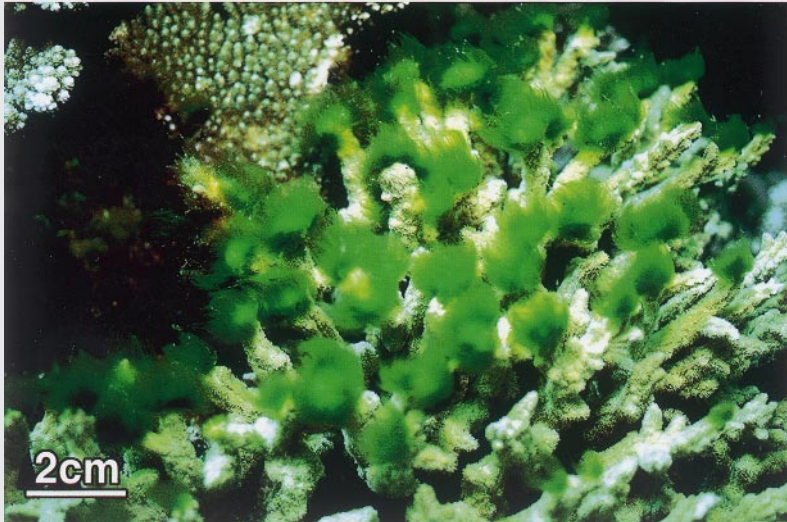


## FAU Institutional Repository

<http://purl.fcla.edu/fau/fauir>

This paper was submitted by the faculty of [FAU's Harbor Branch Oceanographic Institute](#).

Notice: ©1999 Springer. This manuscript is an author version with the final publication available at <http://www.springerlink.com> and may be cited as: Littler, M.M., & Littler, D.S. (1999). Disturbances due to Cyclone Gavin parallel those caused by a ship grounding. *Coral Reefs*, 18(2), 146.  
doi:10.1007/s003380050169



### ***Disturbances due to Cyclone Gavin parallel those caused by a ship grounding***

Winds exceeding 100 knots associated with Cyclone Gavin persisted on the Great Astrolabe Reef, Fiji for several days during March 1997. Sections of the northward-facing reef margins were sheared away and the newly exposed carbonate substrates were rapidly colonized (within 2–3 days) by the green alga *Trichosolen* sp. The upper overview photograph shows a large disturbed area recently colonized by the *Trichosolen* bloom; the lower photograph shows individual *Trichosolen* clumps that have recruited on the broken tips of a single coral head. This event produced hundreds of these large monoculture-like patches (upper photo, to 30-m diam.) that were conspicuous because of their striking bright-green color.

Similar rapid colonization by *Trichosolen molassensis* Bucher & Norris occurred over a decade earlier, following the grounding of

the freighter *Wellwood* on Molasses Reef in the Key Largo National Marine Sanctuary, Florida (Littler et al. 1987). In both cases, *Trichosolen* did not appear to be susceptible to herbivores and persisted for at least several weeks (i.e., the extent of our observations). It is interesting that in both of these spatially and temporally widespread cases, *Trichosolen* was not collected previously from either reef despite extensive/intensive prior taxonomic work.

*Acknowledgments* We sincerely appreciate the field assistance of Barrett Brooks and Joan Koven. Funding was provided by MARPAT Foundation, the National Museum of Natural History Research Opportunities Fund and the Department of Botany, Smithsonian Institution. Smithsonian Marine Station Contr. No. 460 and Harbor Branch Oceanographic Institution Contr. No. 1265.

#### *References*

Littler MM, Littler DS, Norris JN, Bucher KE (1987) Recolonization of algal communities following the grounding of the freighter *Wellwood* on Molasses Reef, Key Largo National Marine Sanctuary. NOAA Tech Memor Ser NOS MEMD 15. 42 pp

M. M. Littler

Department of Botany, National Museum of Natural History, Smithsonian Institution, Washington, DC 20560, USA

D. S. Littler

Division of Marine Science, Harbor Branch Oceanographic Institution, 5600 U.S. 1 North, Fort Pierce, Florida 34946, USA